

Eklund Innovation Inc.

Eklund Infrared Newsletter January-February 2014.

Our overhead **high voltage lines in the US and Canada** are providing a great service to us consumers. Very seldom are there any major breakdowns, flashovers or dropped lines. (Not counting storm damage etc.) The lines are inspected both from the air and from the ground. One inspection method that has been paying off well is the detection of high resistance (Ohm) connections through the emitted heat! **Up to and over 1000 ampere current** could flow through the conductors. A **bad connection can melt** the hardware and cause an outage.

Eklund is your SweSystem Sales and Service connection in the USA and Canada. Our stabilized gimbal camera systems are a must for comprehensive **airborne inspection**.



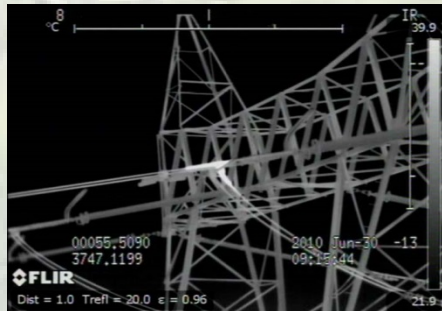
Thermal infrared cameras have been used to detect overheated power line conductors and connections for decades! Particularly when used in airborne applications.

Actually, in the **1970s**, the first company to use **real time Thermal Infrared Cameras in a helicopter for inspection of power lines** was the then **Asplundh Aviation** unit of Asplundh Three Experts in Jenkintown, PA. They successfully flew a **helicopter equipped with a Radiometric & Calibrated (in degrees C) AGA Thermovision® 660** (The big military Green camera) out of North Philadelphia Airport, PA for utility customers.

Today our **EIR/SweSystem modern highly stabilized gimbal camera systems, with state-of-the-art IR 1024x768 HDIR InfraTec™ cameras**, have excellent detection capability to find bad connections on overhead lines flying at practical high speed. The **GPS system** let us know the coordinates where the problems are located. Repair crews can be scheduled to get to the indicated problem areas.



Above: Easy detection of line problems when flying!



Above: Overheated dead end connection

Our EIR/SWE 200,300 and 400 Systems use an **HD TV Video camera that gives you outstanding standard definition NTSC SD video plus a separate 1080p HD channel** available for HD recording.

Using **Radiometrically calibrated Thermal Infrared cameras for early detection** of bad connections is extremely important in the quest of keeping the electrical Grid in excellent shape with a minimum of outages!

[Ask us for a Gimbal Camera price quotation!](#)



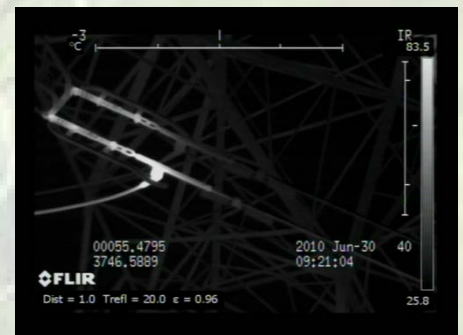
Our 300 Triple and 400 Gimbals can also **host a DayCor® UVc Solarblind Corona Camera** for airborne detection of Corona and Arcing on lines and insulators. The Corona Camera finds problems and flashover conditions **before** insulators fail!



The EIR/SweSystem Gimbal Cameras are **well proven systems flying all over the world in more than 22 countries**. (Even fixed wing.) **Please contact us for pricing and delivery schedule**. Please note: An EIR/SWE 300 HDIR Gimbal camera system is less than \$198,000! **Built to RTCA DO160**.

>>On right: More than 82 degree C increase

We also **sell and rent the Ofil DayCor® Superb™ UVc Corona and Arcing Detection Cameras** made by Ofil Ltd. Please contact us for pricing. The



DayCor® Cameras use the 100% solar-blind Lindner Filter! We rent on a weekly or monthly basis.



Please visit us at HELI-EXPO 2014 in Anaheim, CA
February 25-27 2014! SweSystem Booth 311.

Innovation, Performance, Reliability, Excellence.

Sincerely,
Jan K. Eklund

EKLUND INFRARED/Eklund Innovation Inc.

Your UV Camera Specialists™

2985 Gordy Parkway, Marietta, GA 30066

Voice: 770-578-4435

Fax: 770-578-9899, Email: Info@EklundIR.com, Website: www.eklundir.com, www.coronacamerarental.com